

105

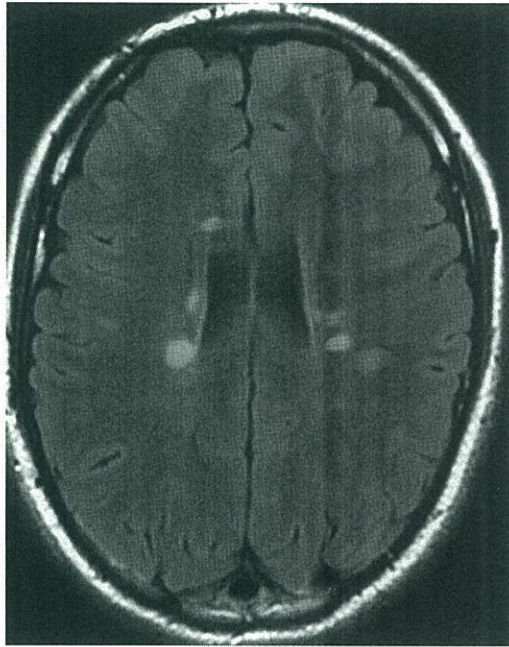
|

別 冊



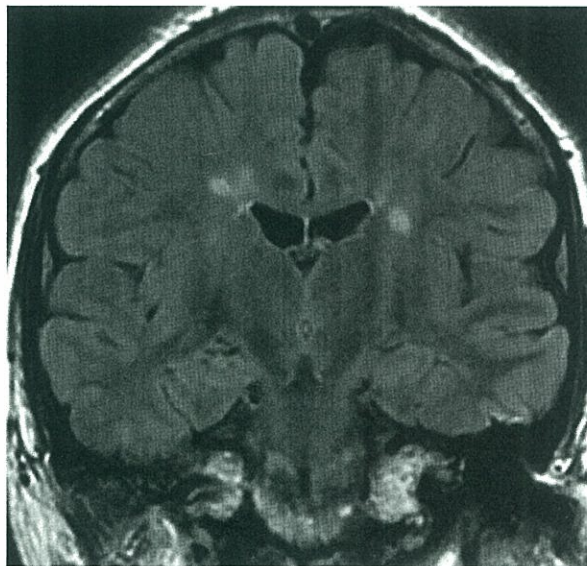
No. 1 A

(1 問題 30)

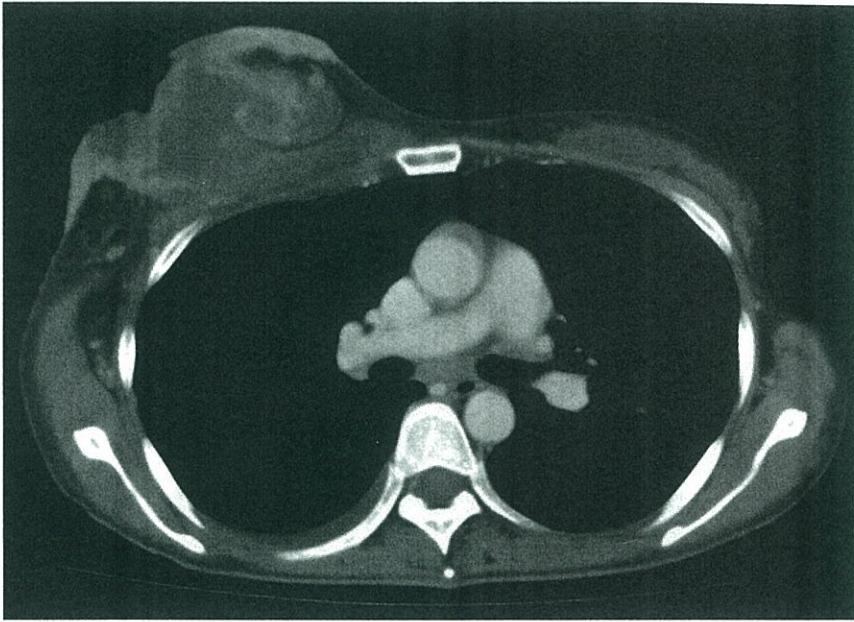


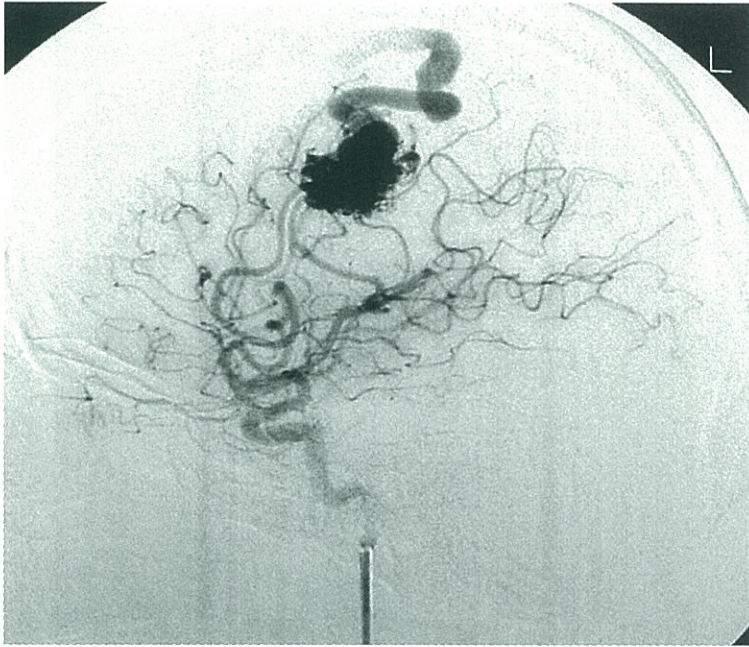
No. 1 B

(1 問題 30)



冠状断像





No. 4

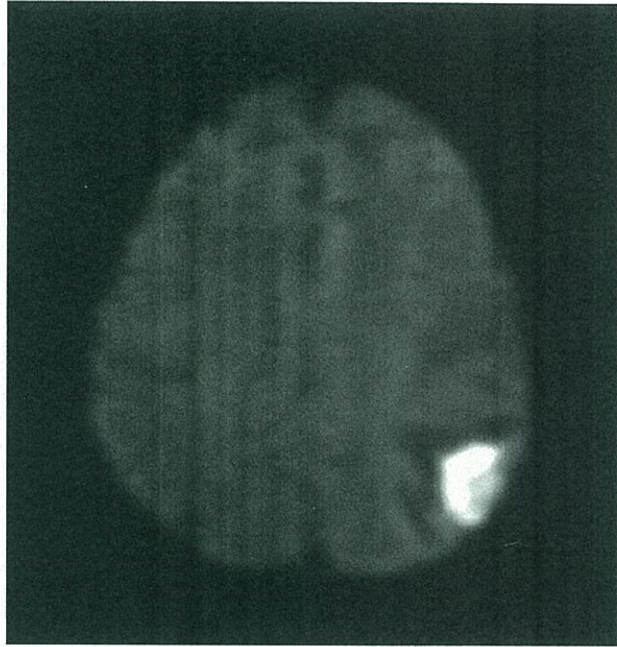
(1 問題 40)





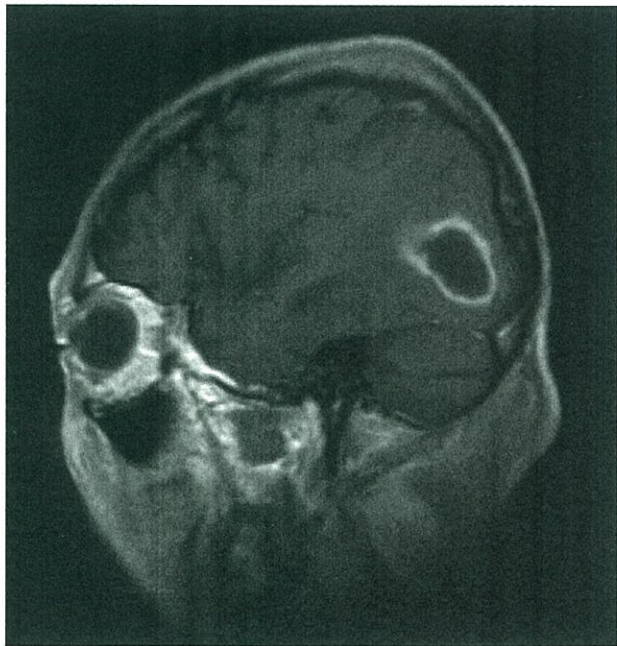
No. 6 A

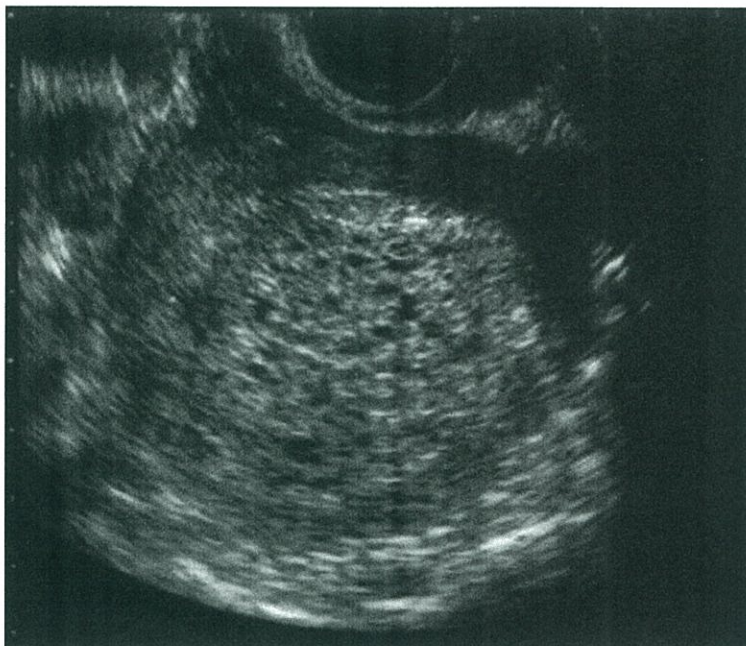
(I 問題 42)

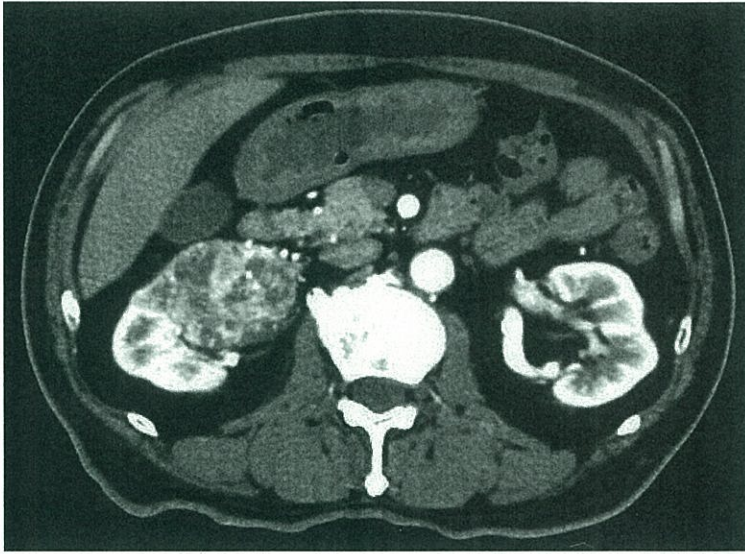


No. 6 B

(I 問題 42)







余 白

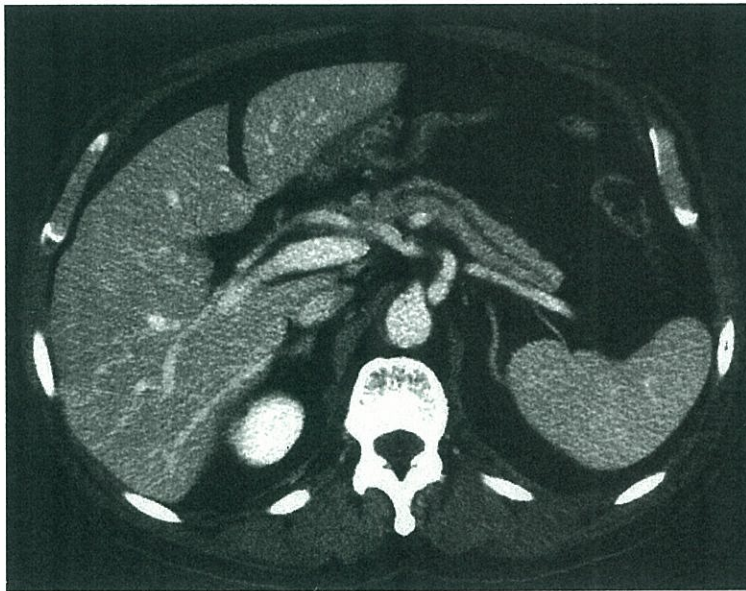
No. 9 A

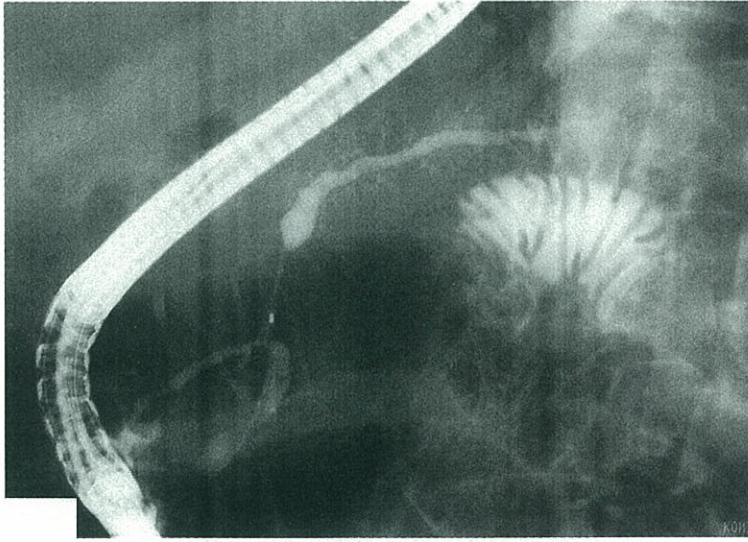
(1 問題 45)

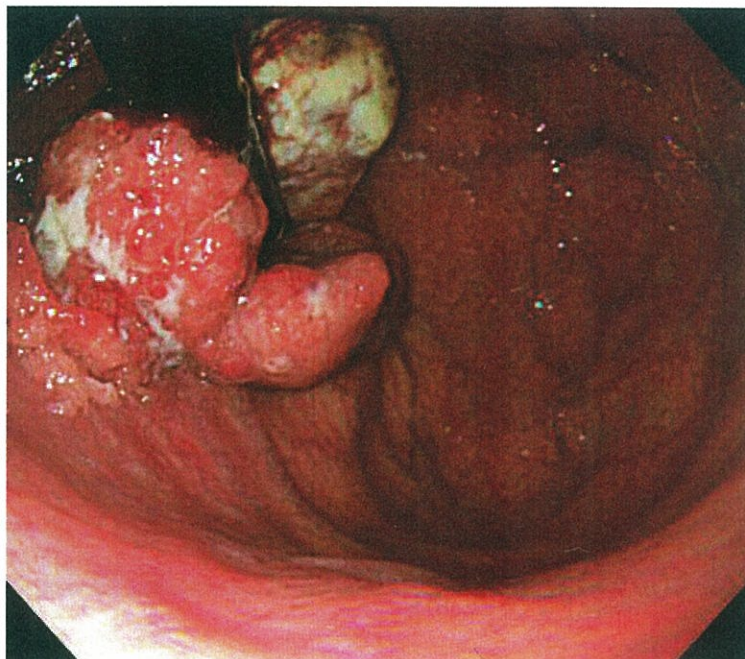


No. 9 B

(1 問題 45)

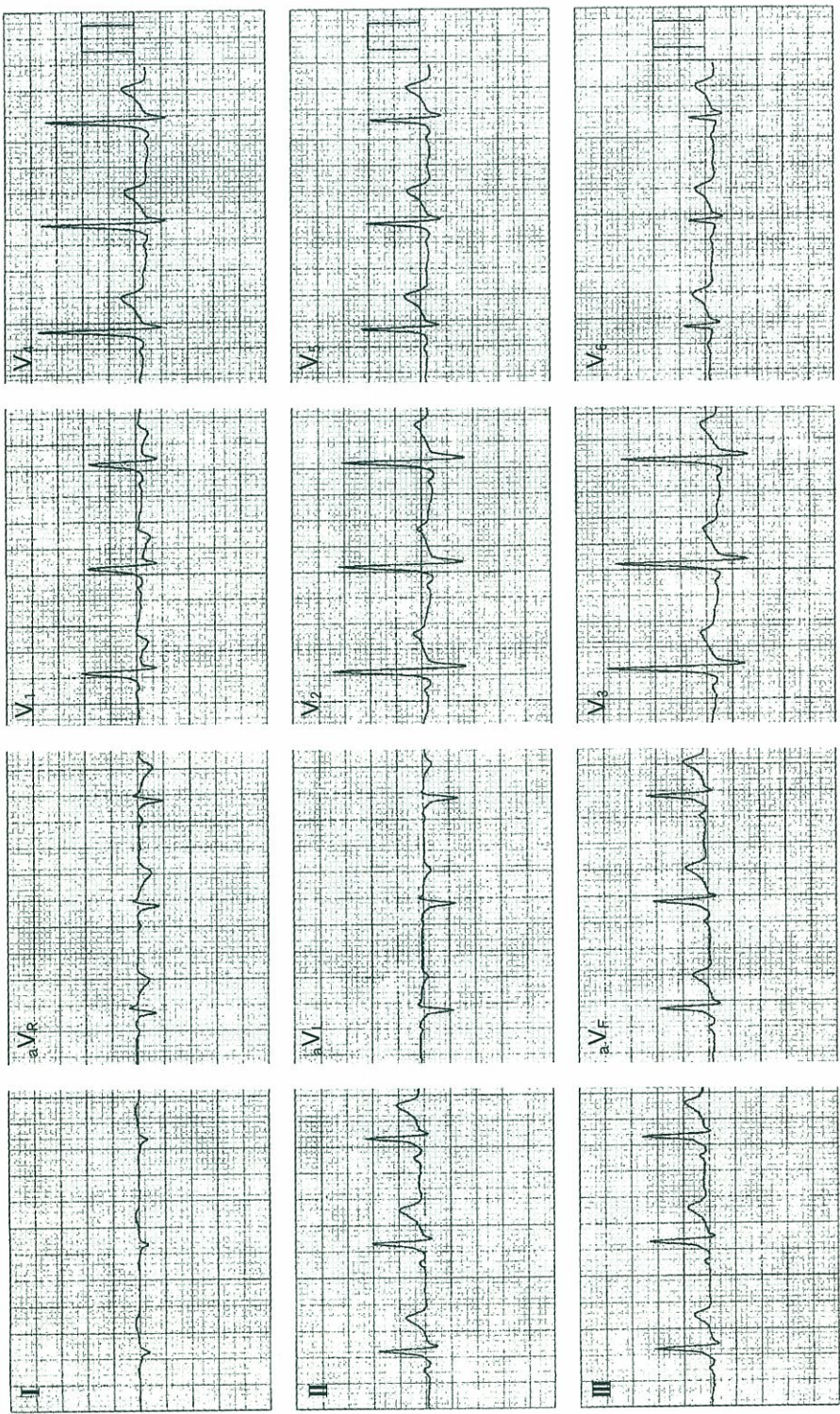






No. 11

( I 問題 49 )



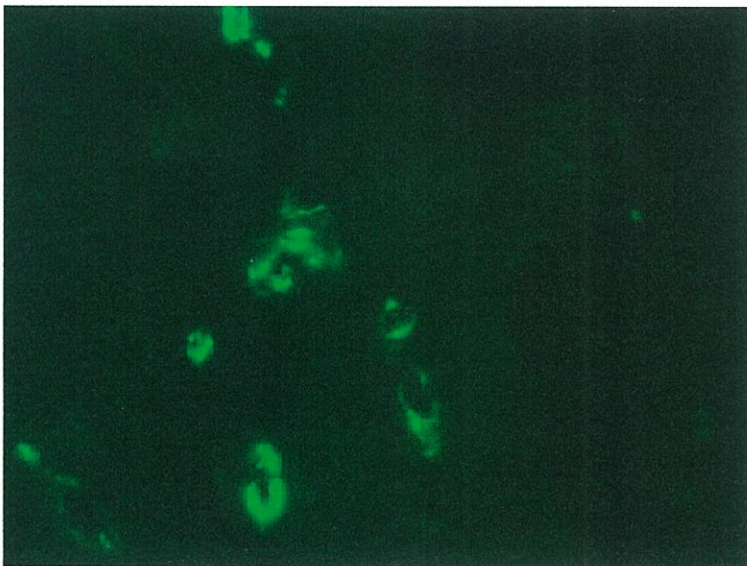
No. 12 A

(1 問題 55)



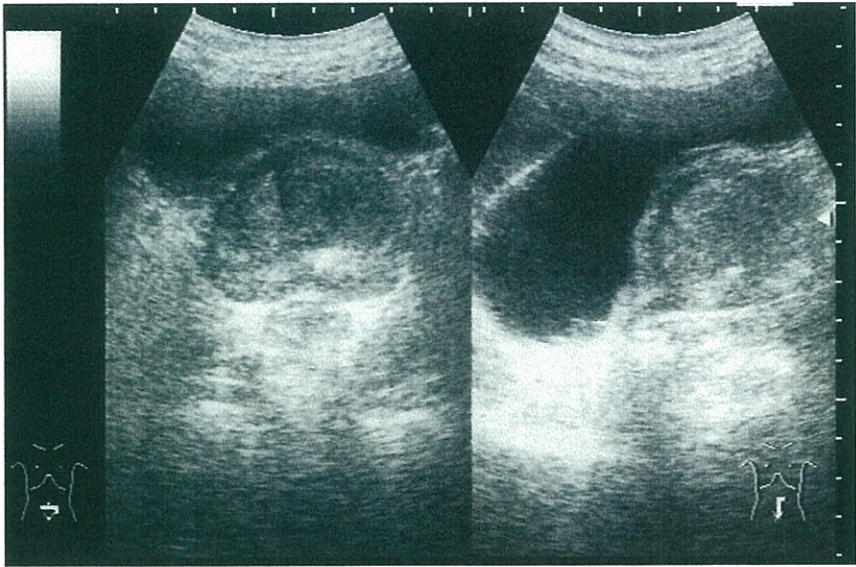
No. 12 B

(1 問題 55)



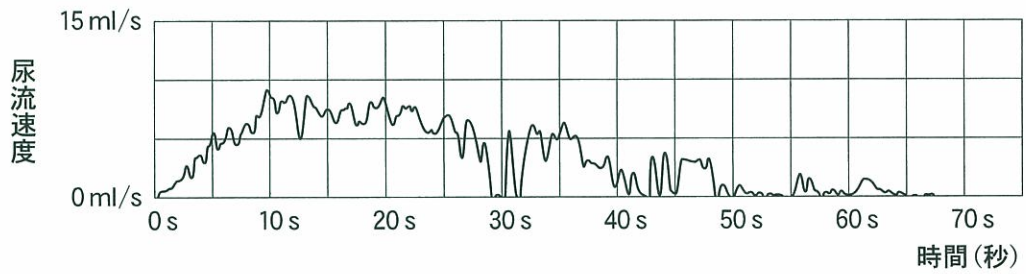
No. 13 A

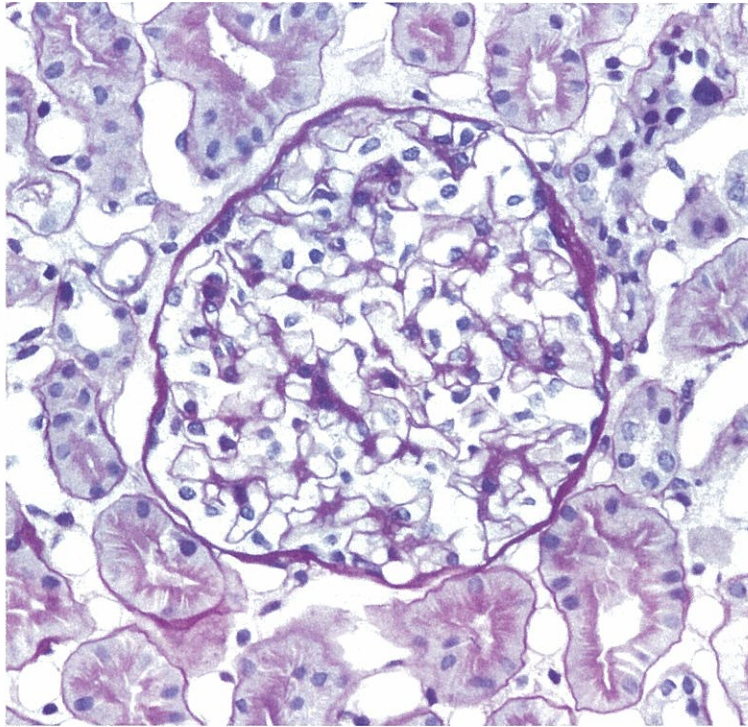
( I 問題 56)

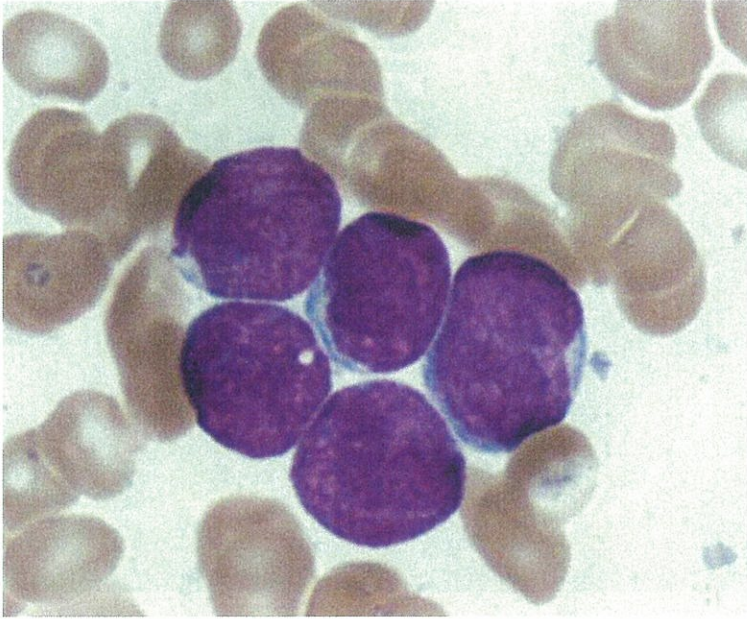


No. 13 B

( I 問題 56)

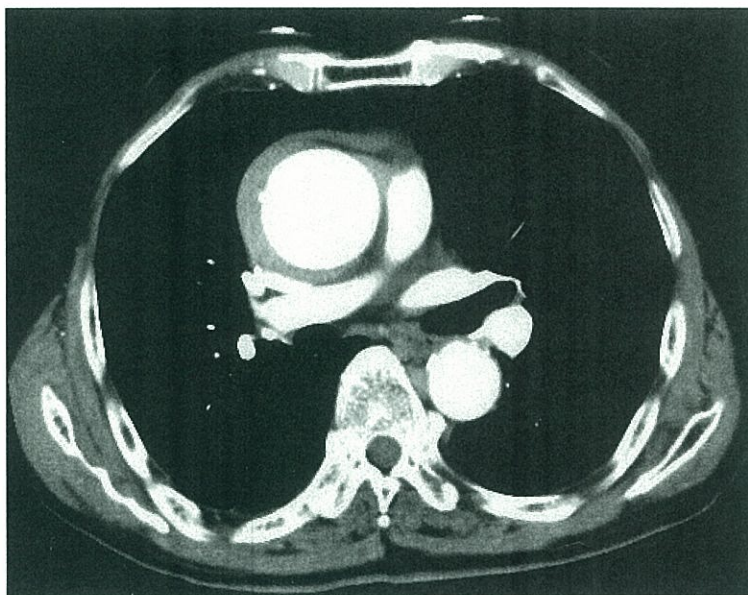






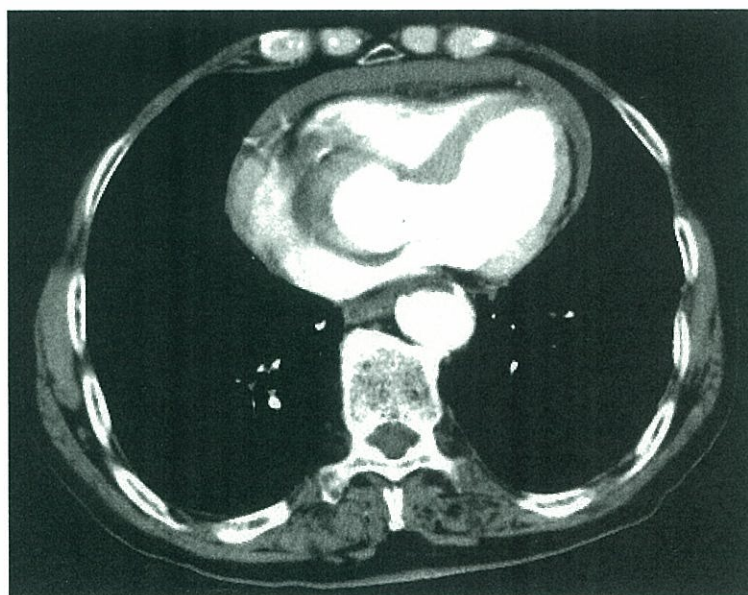
No. 16 A

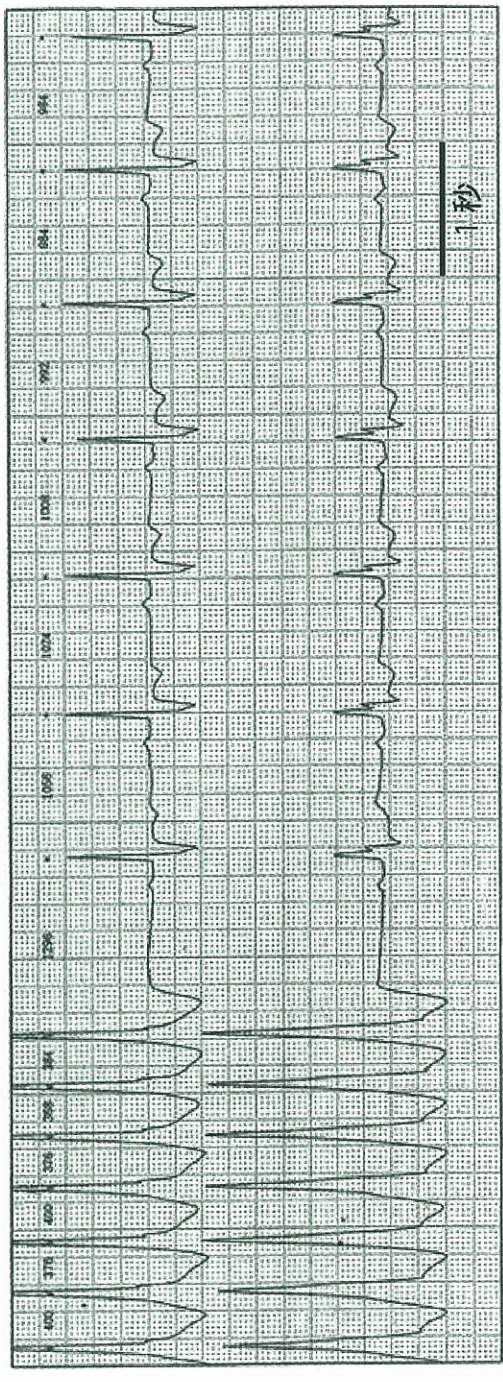
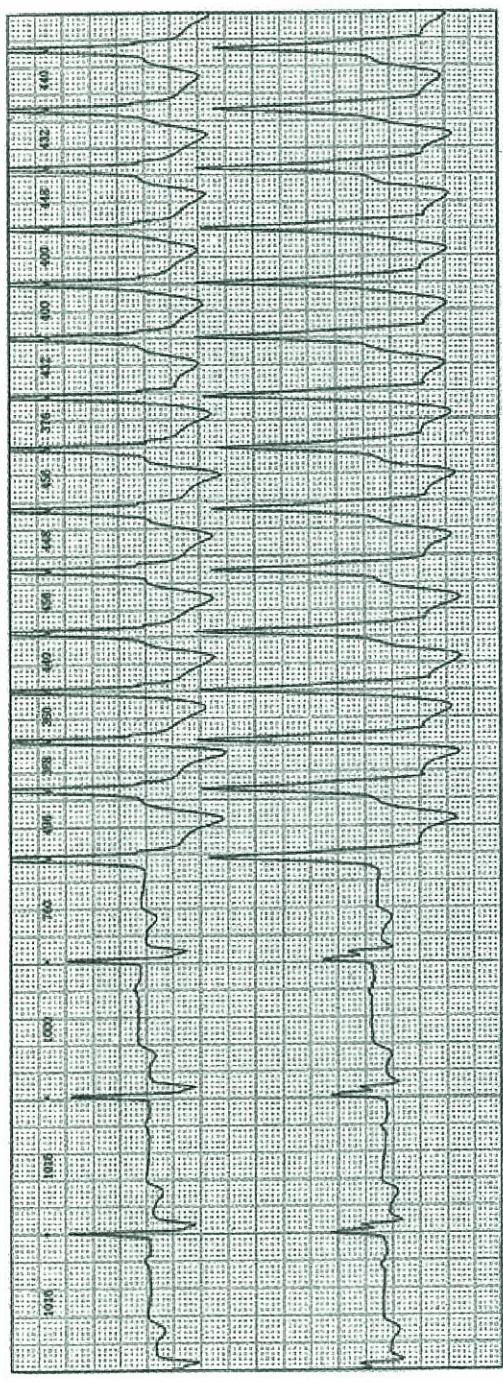
(I 問題 59)



No. 16 B

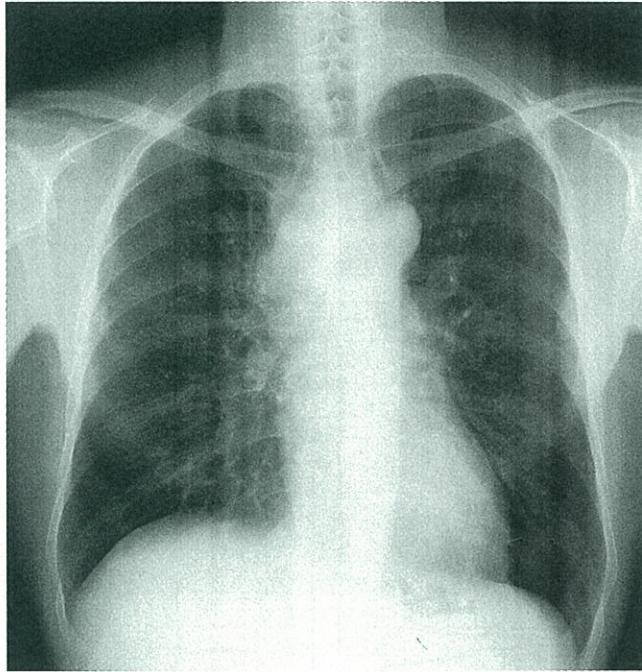
(I 問題 59)





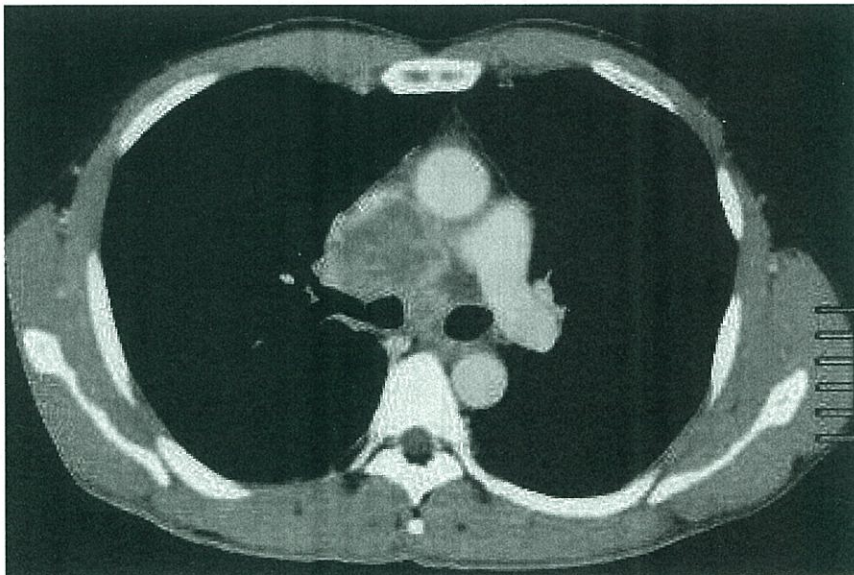
No. 18 A

(1 問題 62)



No. 18 B

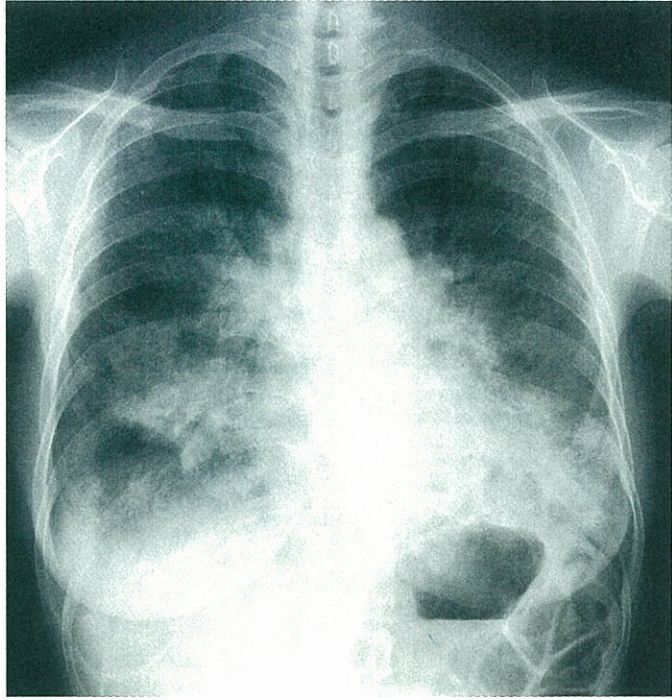
(1 問題 62)



余 白

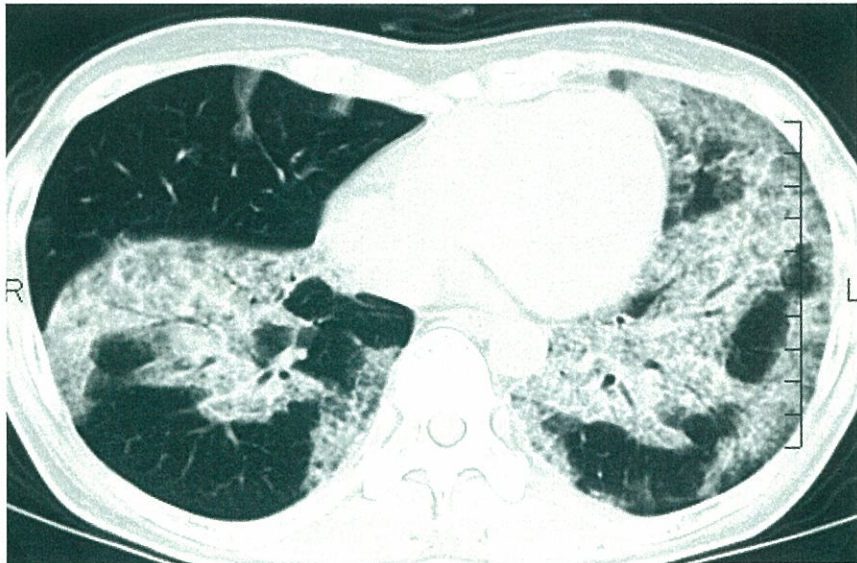
No. 19 A

(I 問題 63)



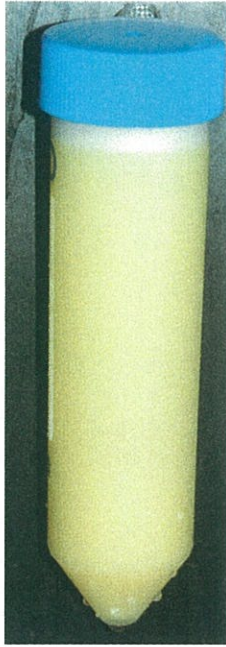
No. 19 B

(I 問題 63)



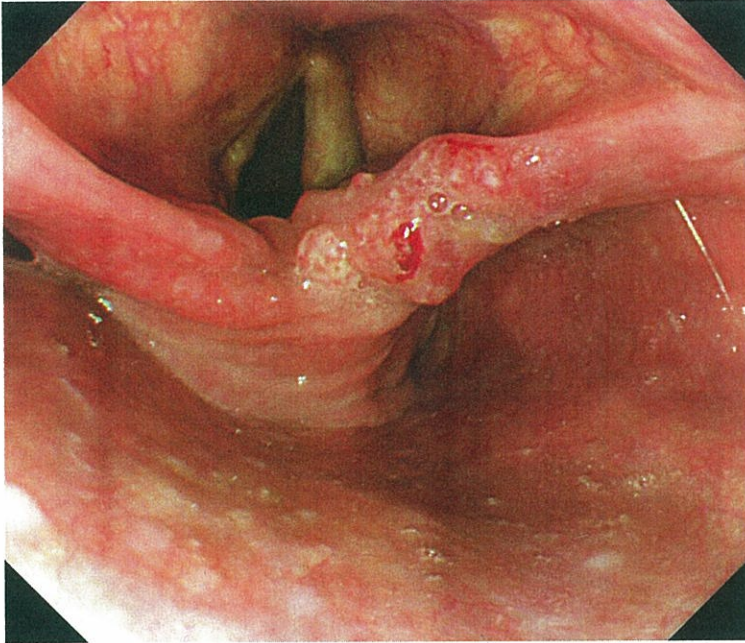
No. 19 C

(1 問題 63)



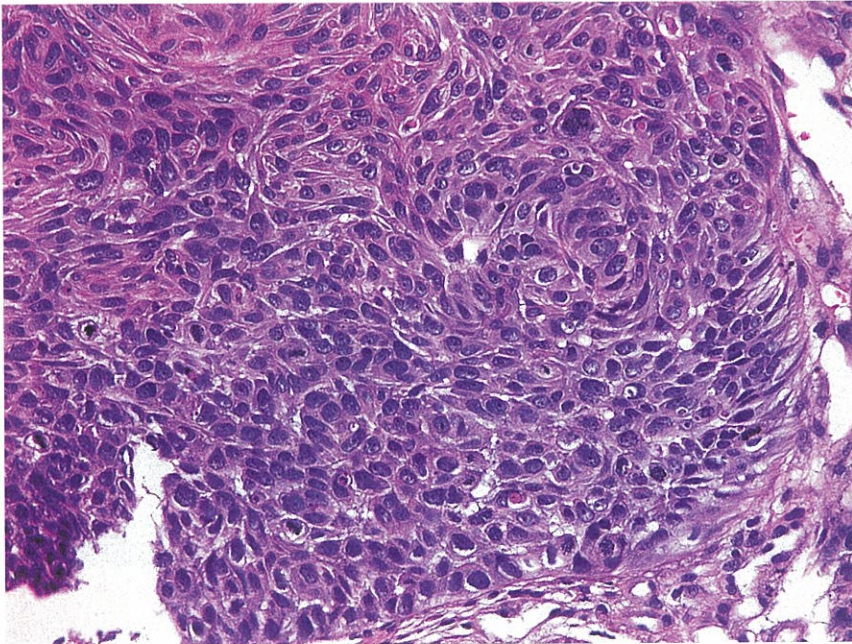
No. 20 A

(I 問題 64)



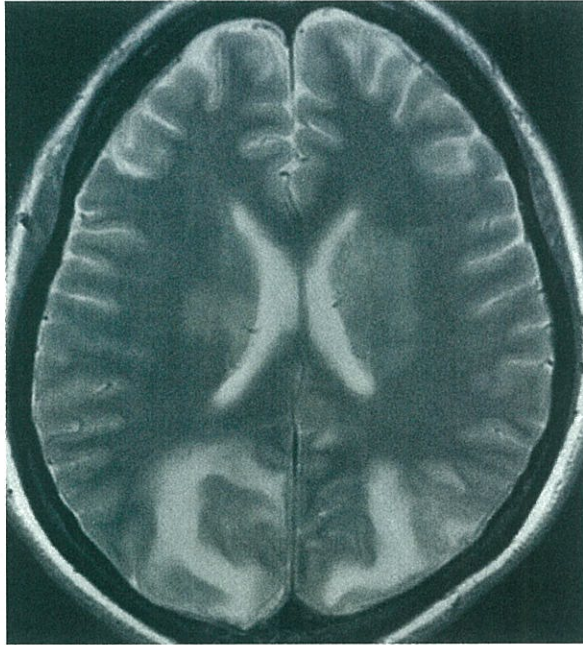
No. 20 B

(I 問題 64)



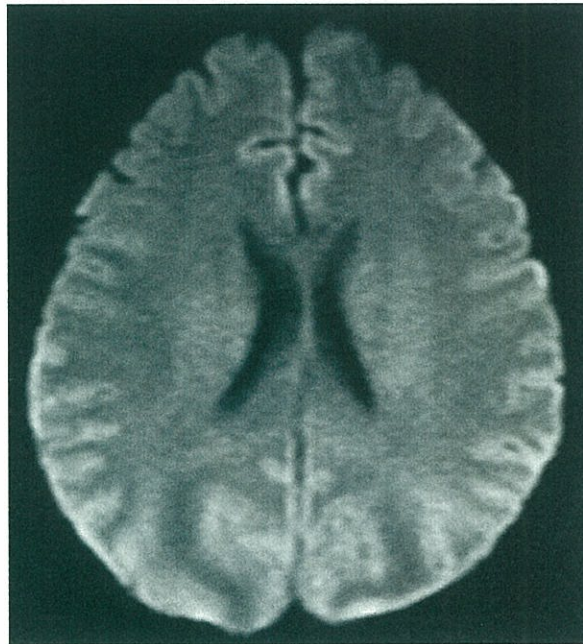
No. 21 A

(1 問題 67)

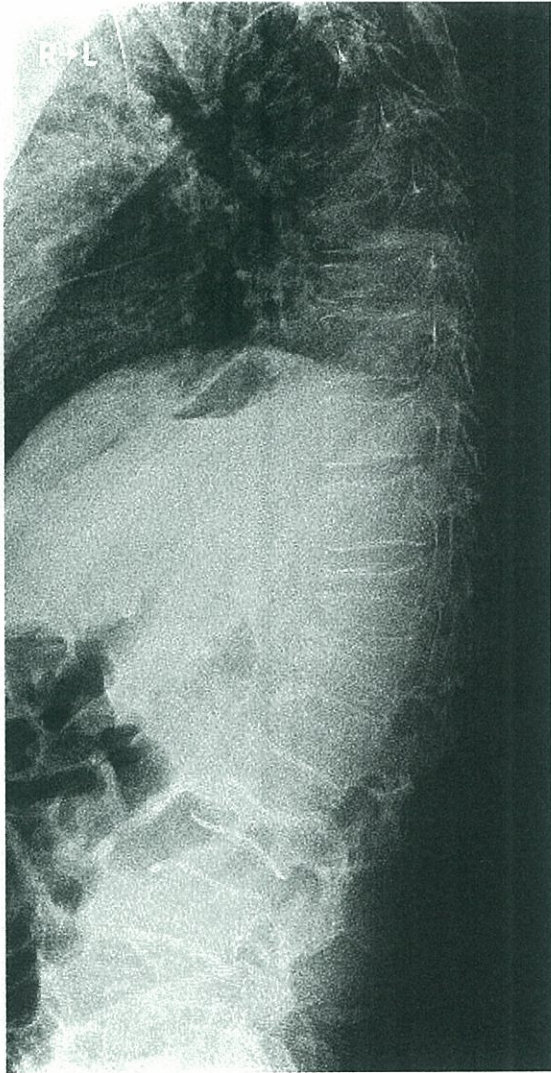


No. 21 B

(1 問題 67)

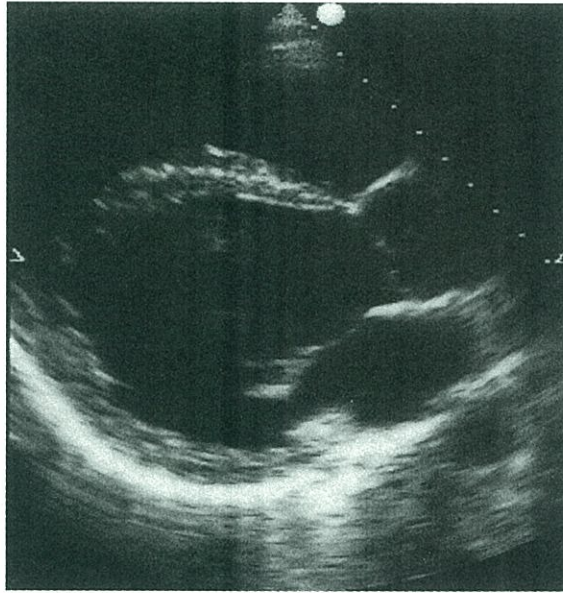






No. 24 A

(I 問題 74)



拡張末期

No. 24 B

(I 問題 74)



収縮末期

