

105

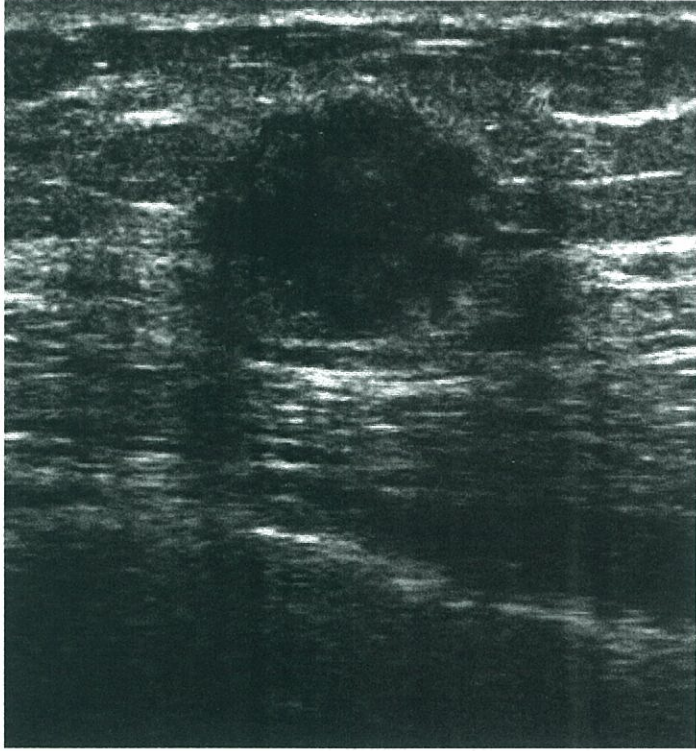
D

別 冊



No. 1

(D 問題7)



10 mm

No. 2 A

(D 問題 20)



T2強調

No. 2 B

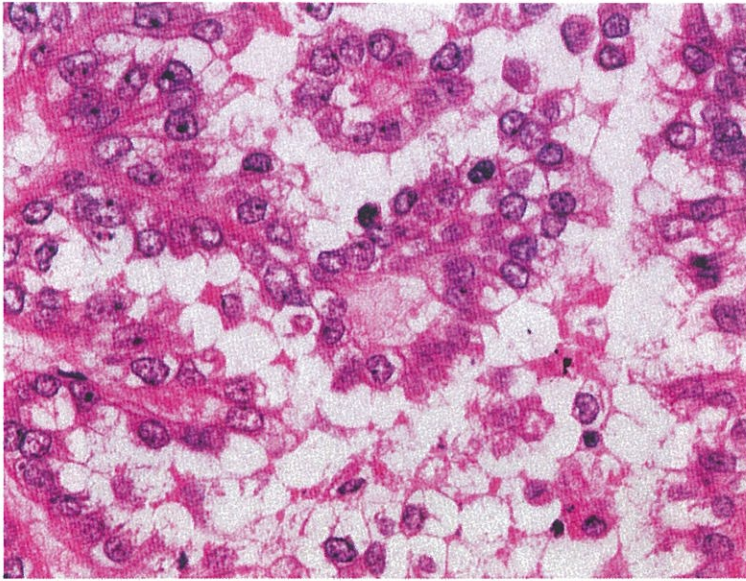
(D 問題 20)



造影T1強調

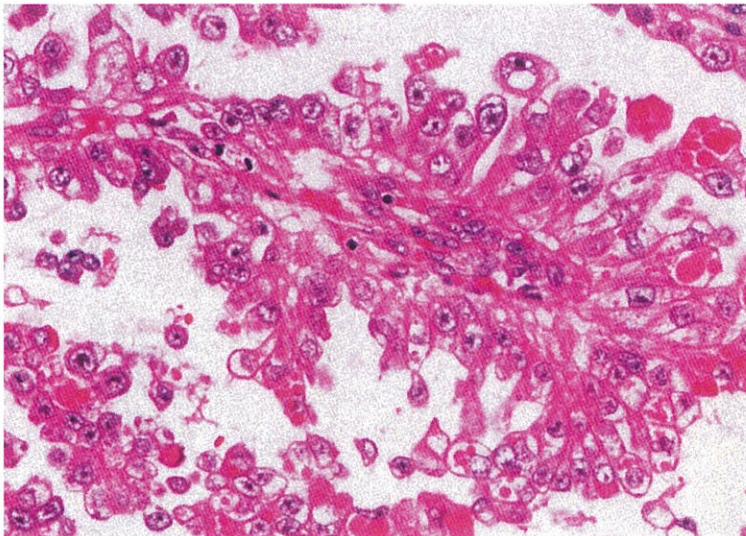
No. 2 C

(D 問題 20)



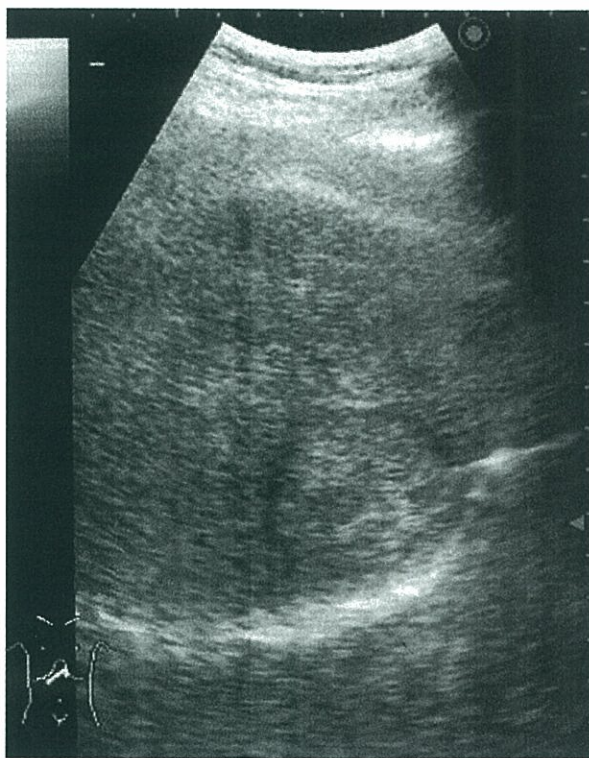
No. 2 D

(D 問題 20)



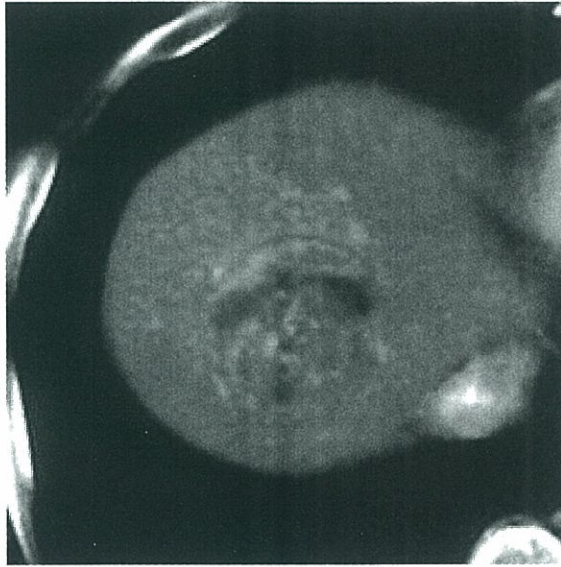
No. 3 A

(D 問題 21)



No. 3 B

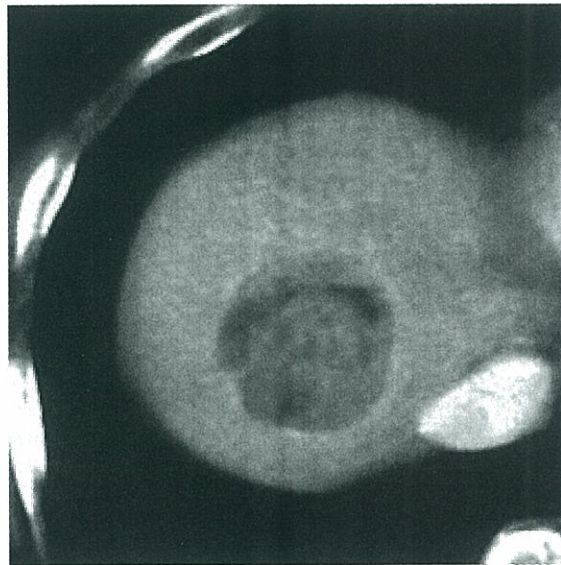
(D 問題 21)



早期相

No. 3 C

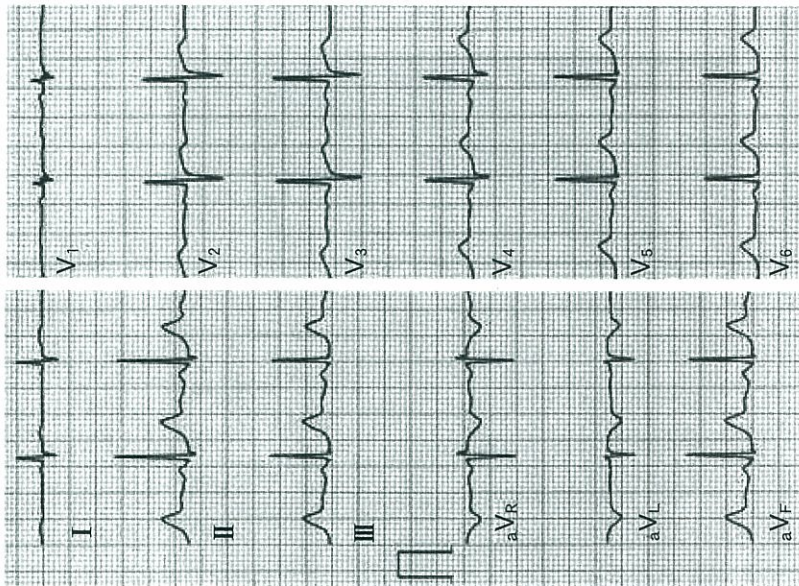
(D 問題 21)



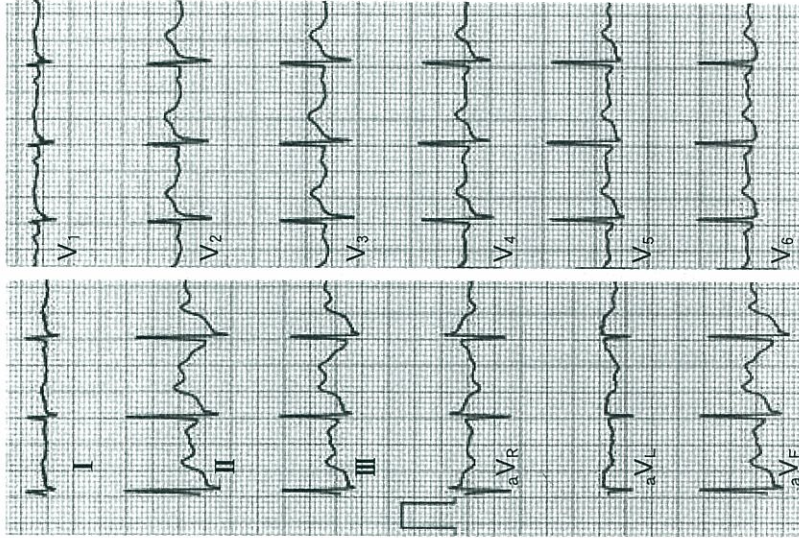
後期相

No. 4

(D 問題 24)



負荷前

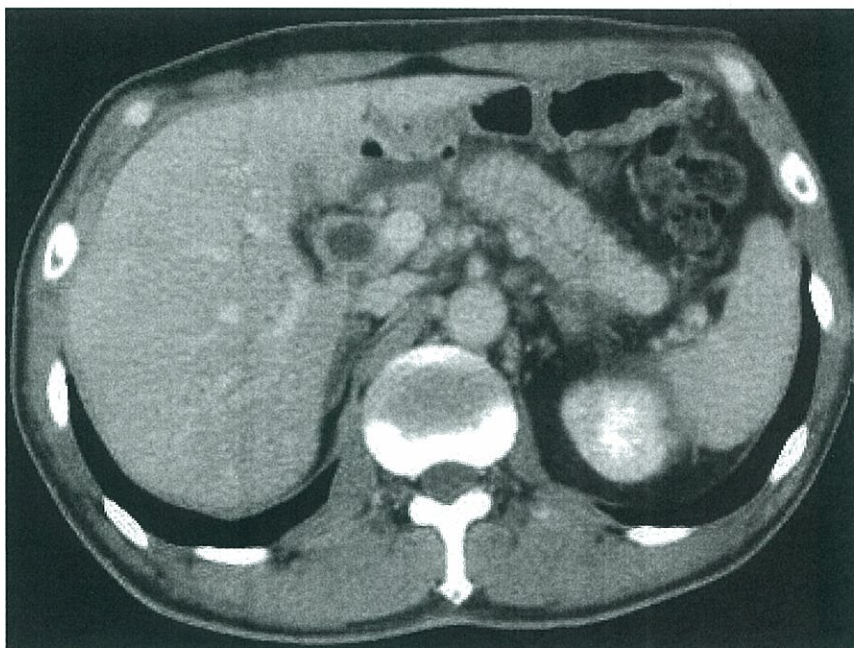


負荷後

余 白

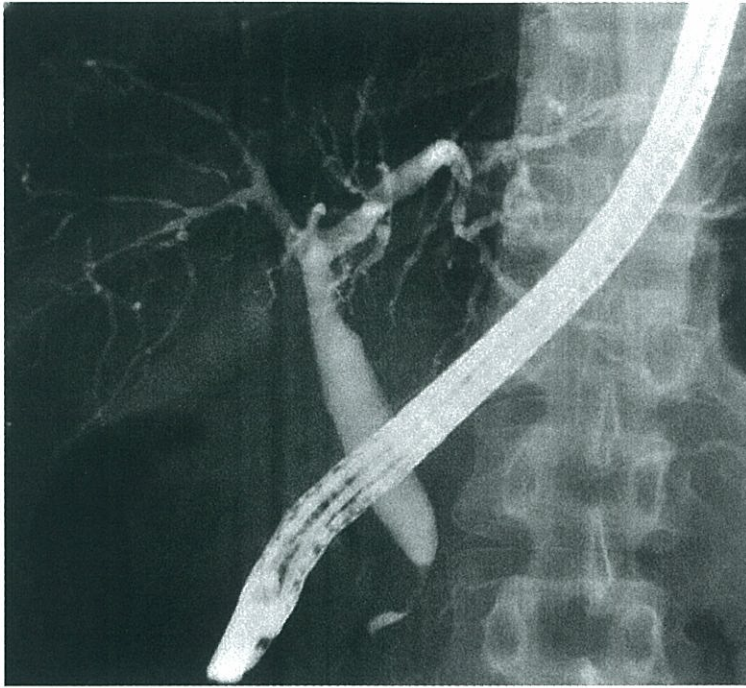
No. 5 A

(D 問題 25)



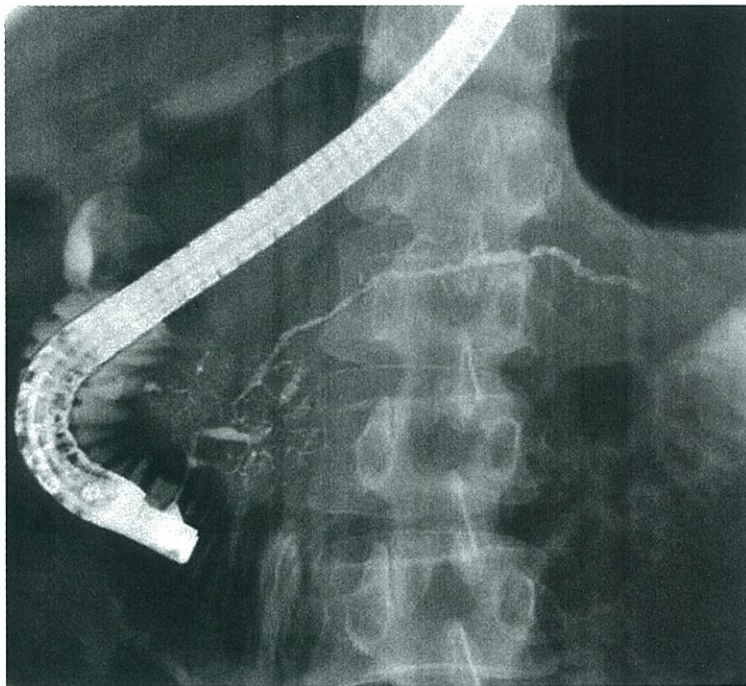
No. 5 B

(D 問題 25)



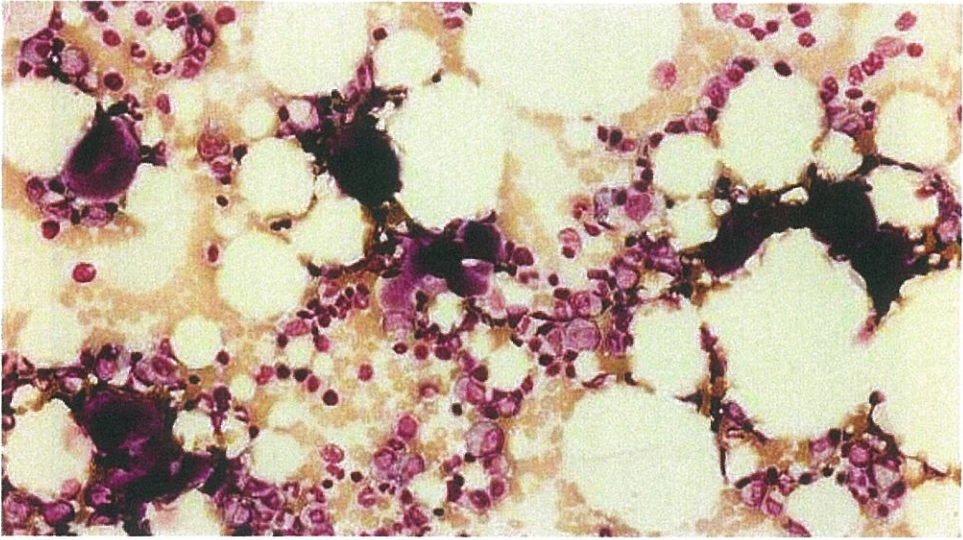
No. 5 C

(D 問題 25)



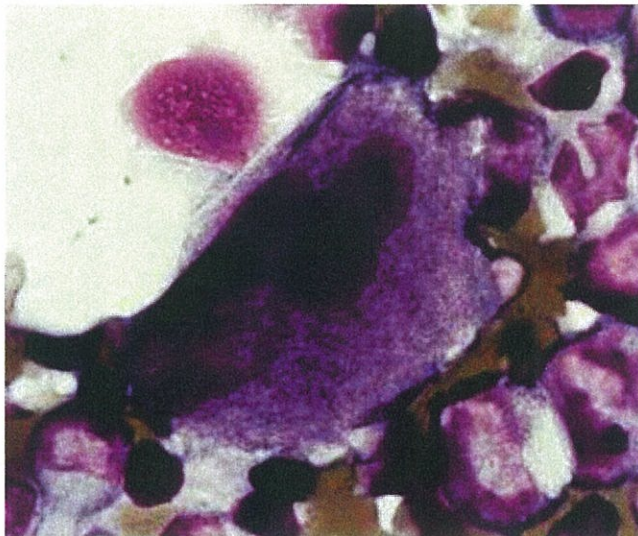
No. 6 A

(D 問題 27)



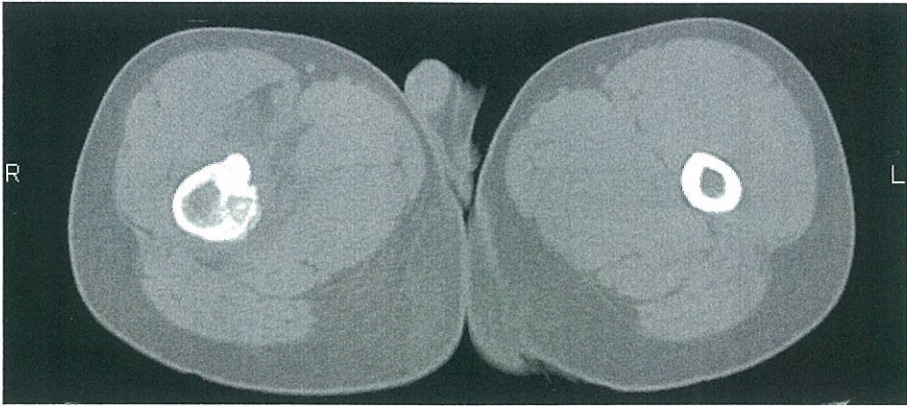
No. 6 B

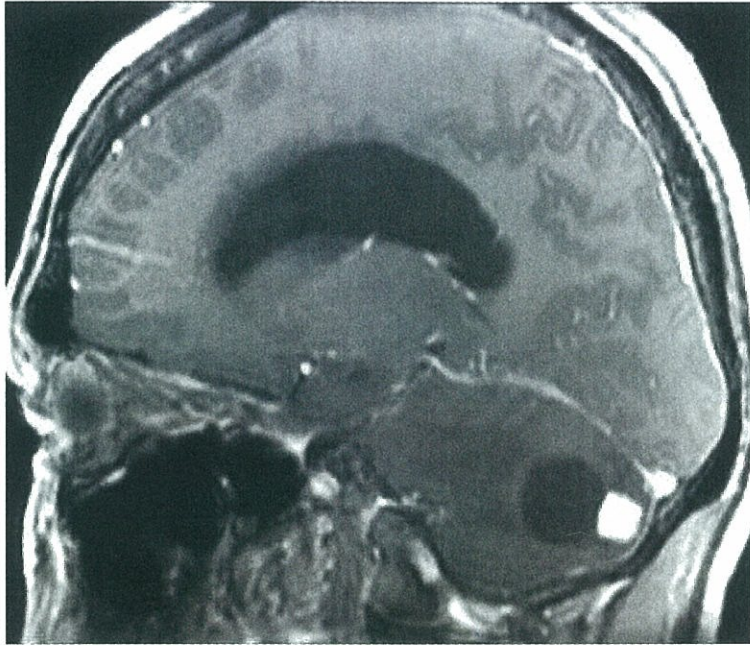
(D 問題 27)



No. 7

(D 問題 29)





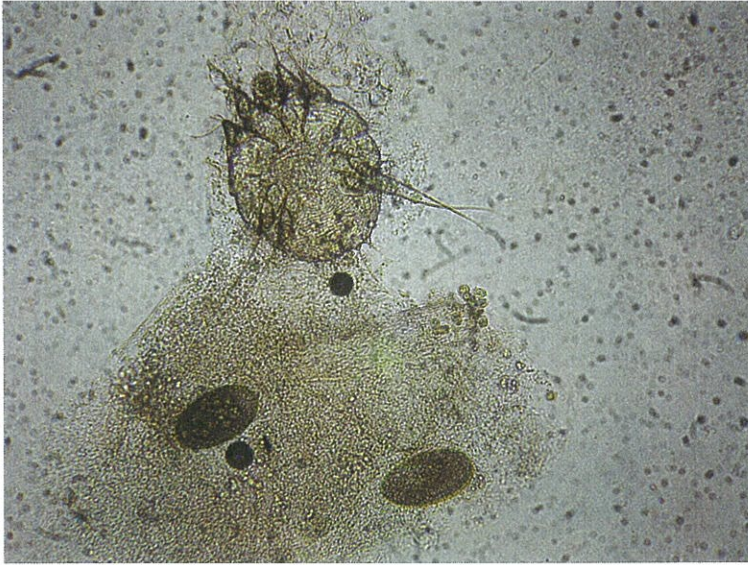
No. 9

(D 問題 32)



No. 10

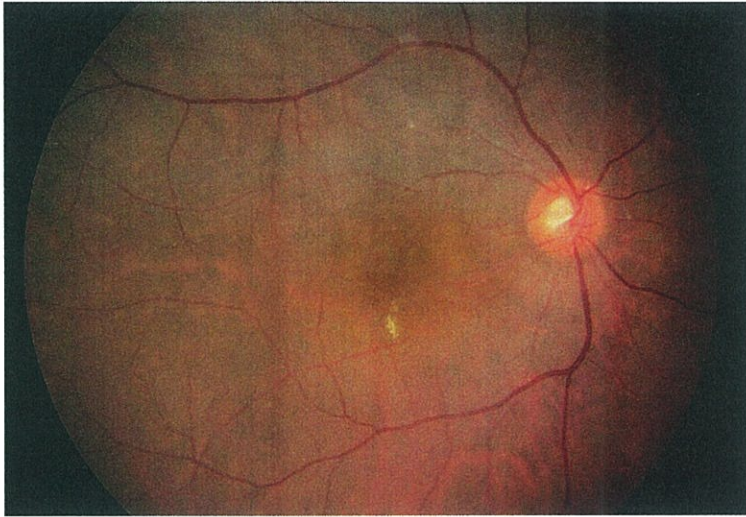
(D 問題 33)



No. 11 A

(D 問題 36)

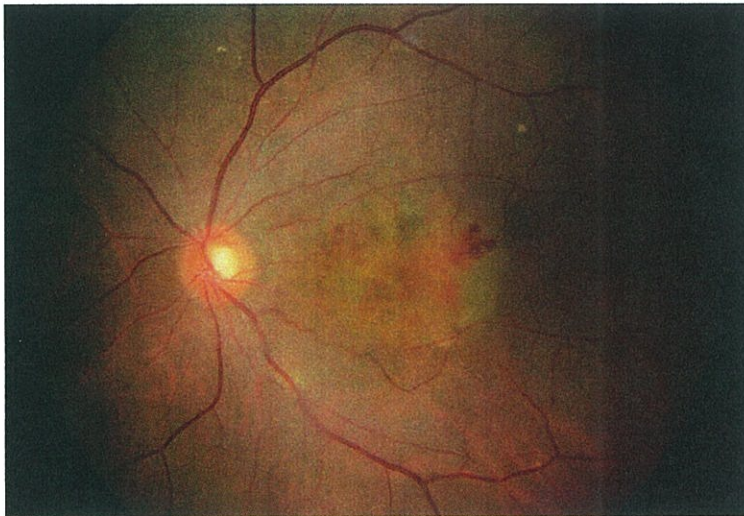
右 眼

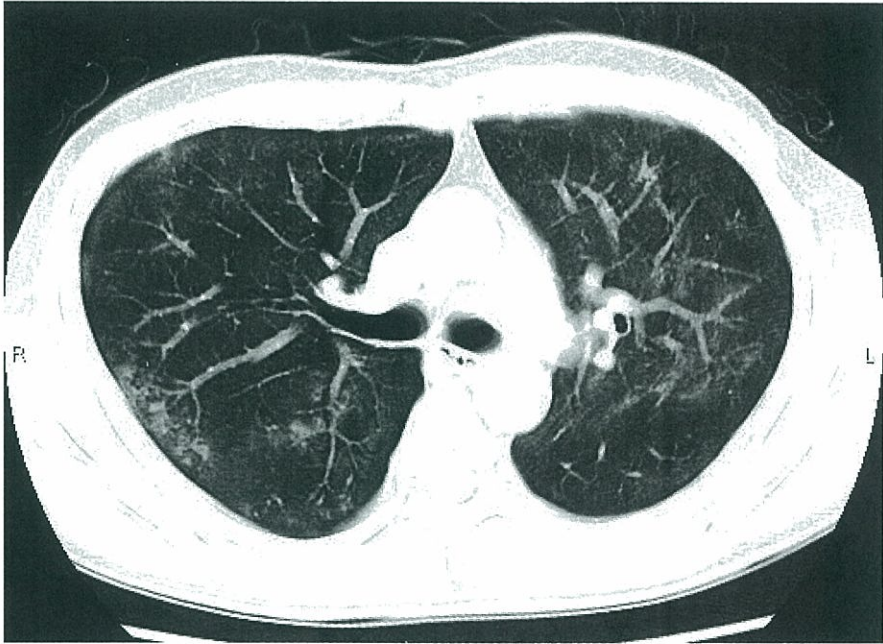


No. 11 B

(D 問題 36)

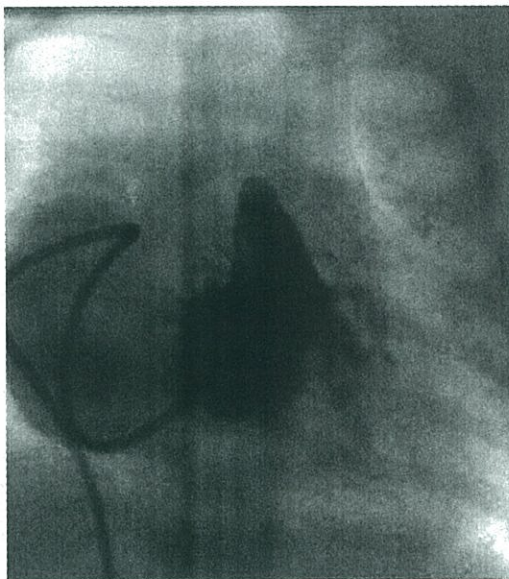
左 眼





No. 13 A

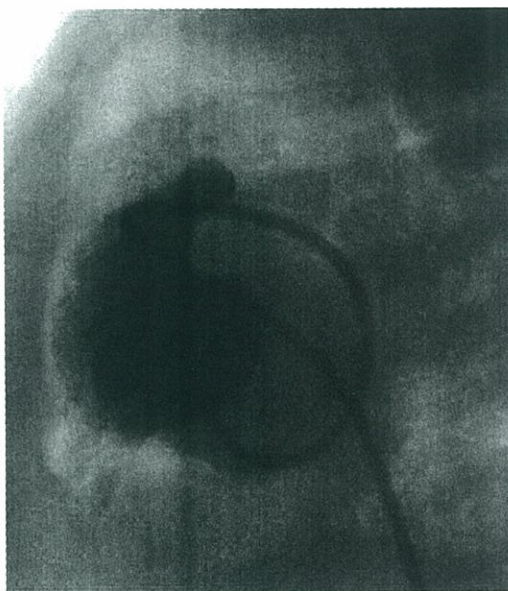
(D 問題 39)



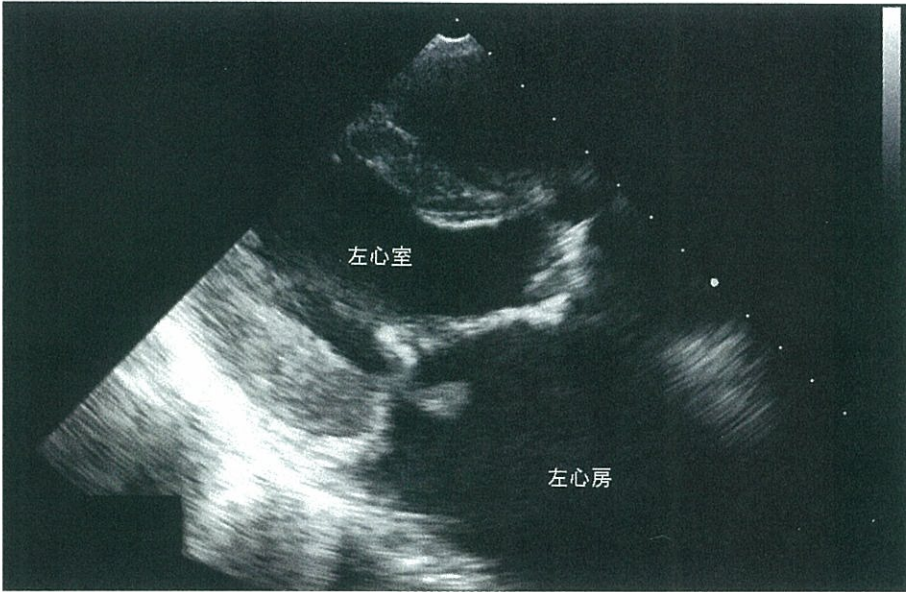
右室造影正面像

No. 13 B

(D 問題 39)



右室造影側面像



No. 15 A

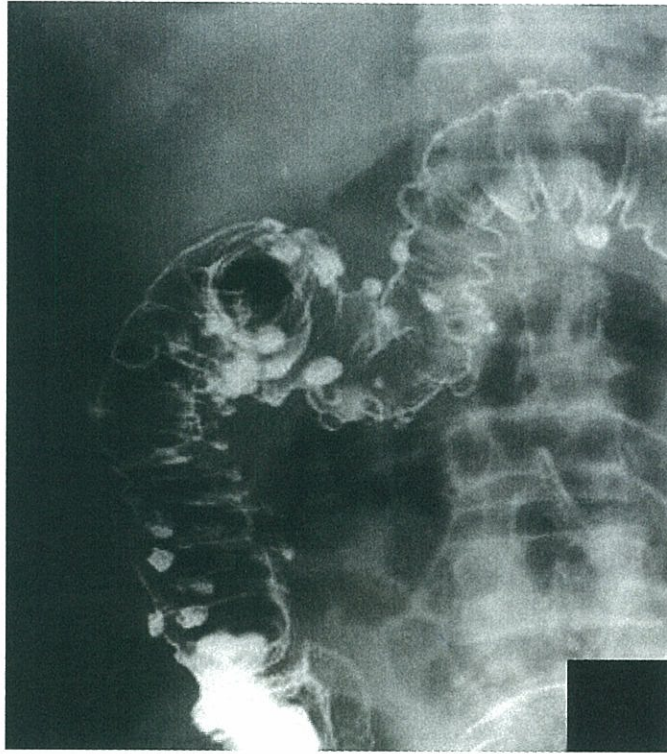
(D 問題 41)

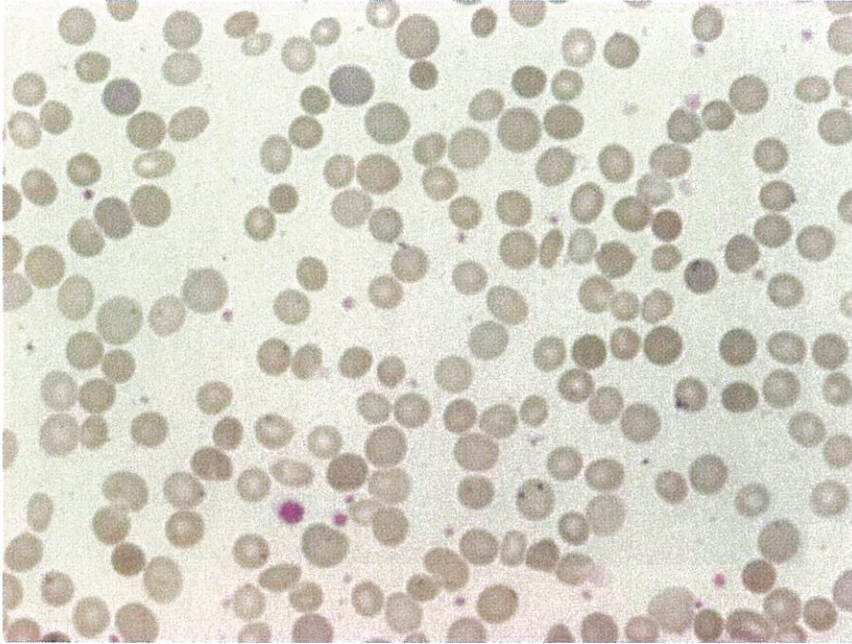


No. 15 B

(D 問題 41)

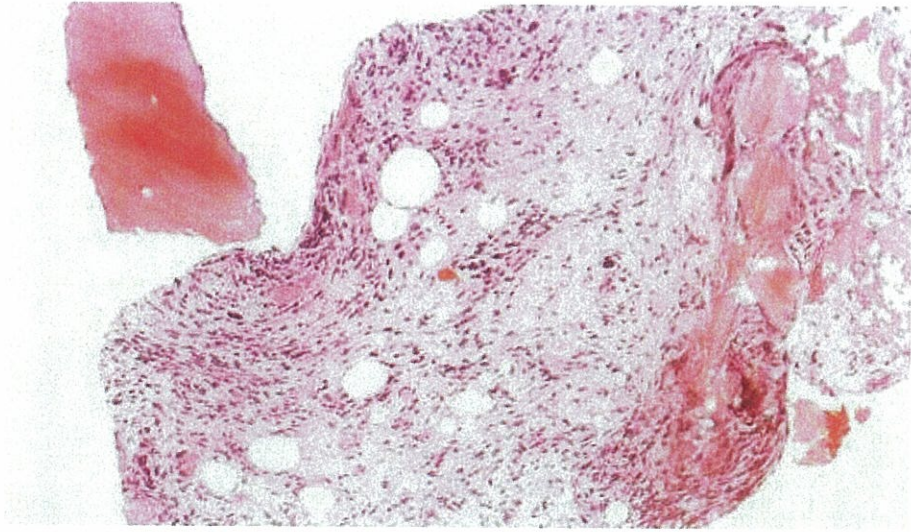






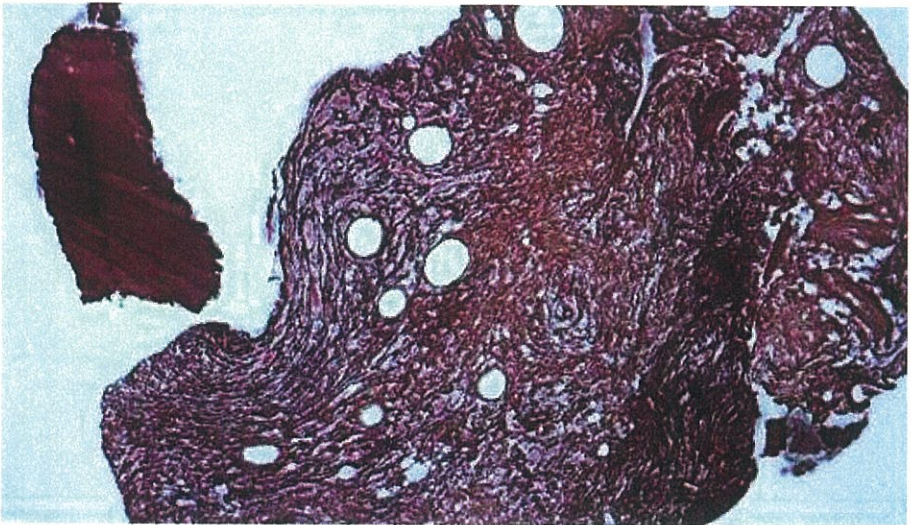
No. 18 A

(D 問題 44)



No. 18 B

(D 問題 44)



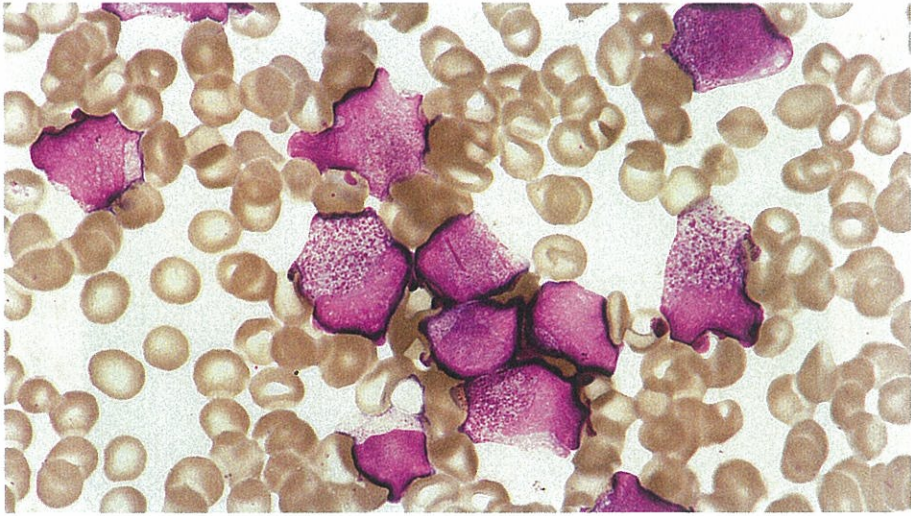
No. 19

(D 問題 47)



No. 20

(D 問題 48)



No. 21

(D 問題 49)

